

Our top tips for running a makerspace that is

OUT OF THIS WORLD!

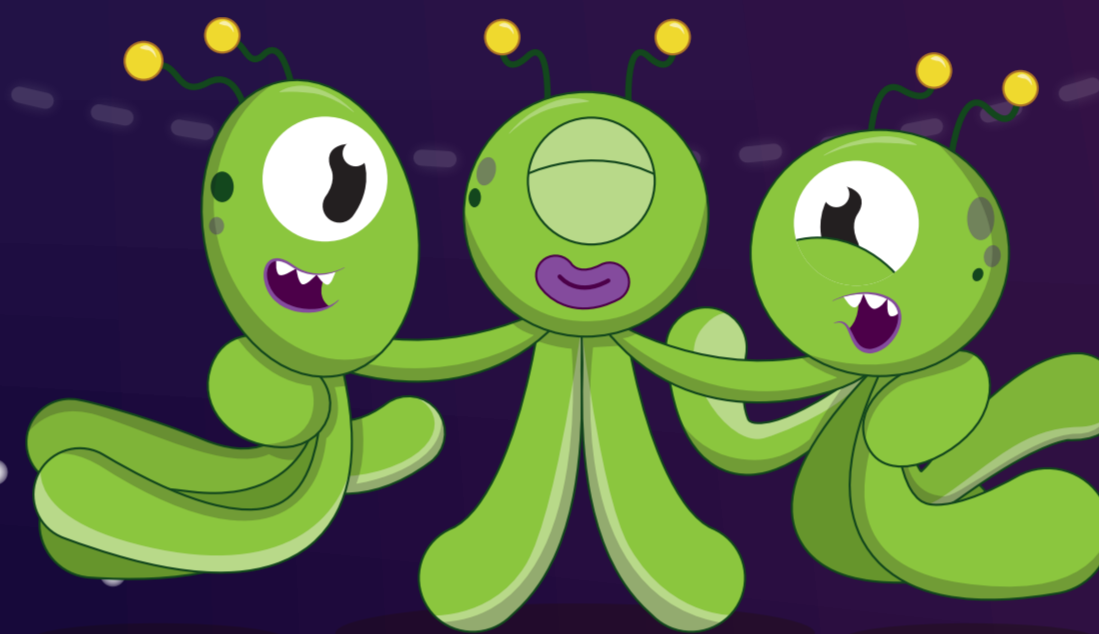
1 Be learner-led

Involve your learners in the decision-making for your makerspace. It will make them more invested and more likely to invite others along.



2 Find your community

Get support from other local educators and makers. They can help you raise funds, deal with administrative tasks, and come up with creative project ideas.



3 Be inclusive

Think about how different groups of people can find out about your makerspace and what they might need in order to use it. Build a diverse maker community that brings together learners with different life experiences and ideas – you will inspire each other to create fantastic projects!



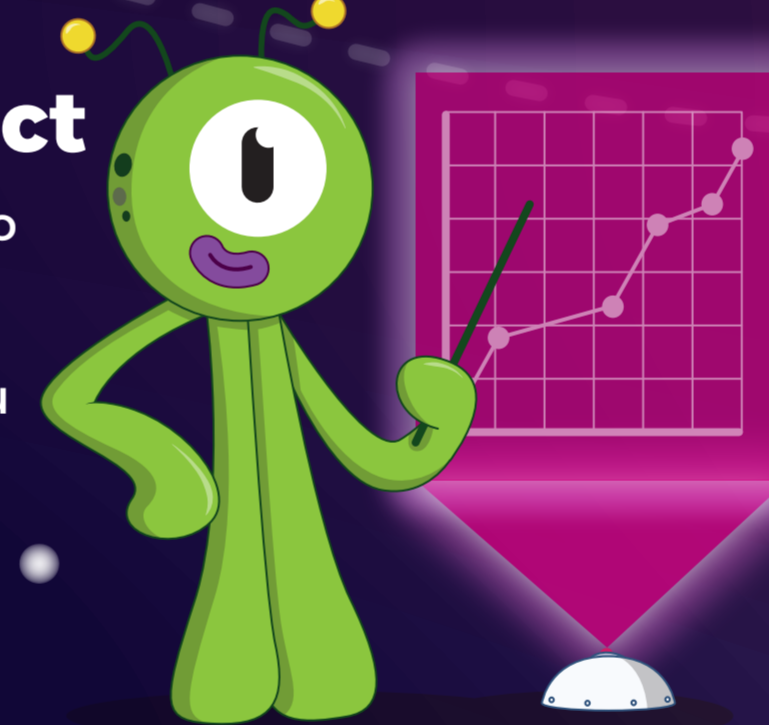
4 Plan ahead

Embed yourself in your place of learning by working in harmony with its existing frameworks (e.g. a school curriculum or library event schedule).



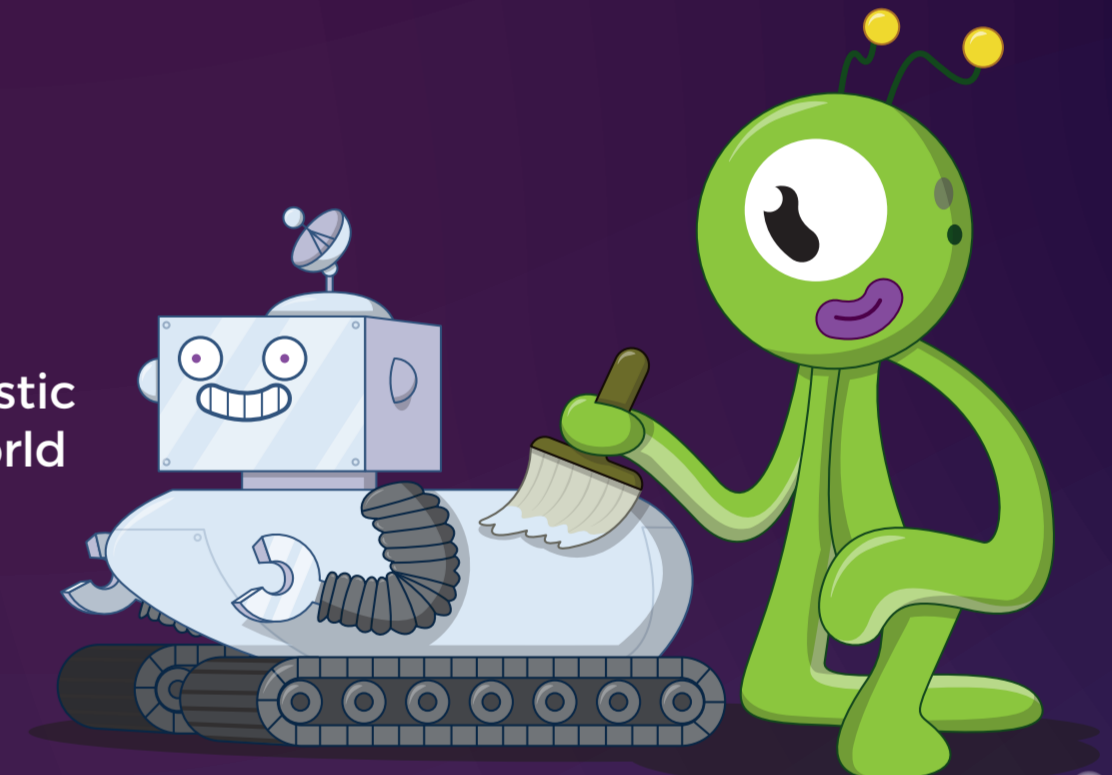
5 Measure impact

Use metrics to find out who is using your makerspace, how they are using it, and what they are learning. It will help you to better serve your community!



6 Get arty

Encourage your learners to go all out with their artistic creations and make the world a more beautiful place.



7 Make time to explore

Help your learners explore weird and wonderful project ideas every day. Don't worry if an idea doesn't work – they'll still learn from it!



8 Embrace failure

Let everyone know that 'Fail' stands for 'First attempt in learning', and that your makerspace is a place where people can feel comfortable experimenting and failing in the process.



9 Use your passion

If you are going to do something, give it everything you've got. Let your passion, and your community's passions, guide you to achieve amazing things together. Good luck!



Visit rpf.io/projects for more making ideas.

Raspberry Pi Foundation, UK charity No. 1129409

